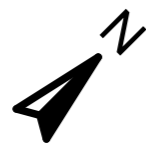




**FLOOR AREAS :**

RECEPTION FOYER :	48.00 m <sup>2</sup>	GYMNASIUM :	36.57 m <sup>2</sup>
ALFRESCO :	83.73 m <sup>2</sup>	CHANGE (F) :	12.90 m <sup>2</sup>
MEETING / MOVIE :	55.39 m <sup>2</sup>	CHANGE (M) :	12.90 m <sup>2</sup>
LOUNGE / DINING :	142.57 m <sup>2</sup>	HAIRDRESSER :	8.11 m <sup>2</sup>
KITCHEN :	19.11 m <sup>2</sup>	LIBRARY :	19.38 m <sup>2</sup>
FEMALE :	13.99 m <sup>2</sup>	ACCESS WC :	6.26 m <sup>2</sup>
MALE :	13.99 m <sup>2</sup>	OFFICE 1 :	15.34 m <sup>2</sup>
CHAIR STORE :	6.40 m <sup>2</sup>	OFFICE 2 :	12.72 m <sup>2</sup>
		STORE :	8.95 m <sup>2</sup>
		NURSE :	13.09 m <sup>2</sup>
		PASSAGE :	34.76 m <sup>2</sup>



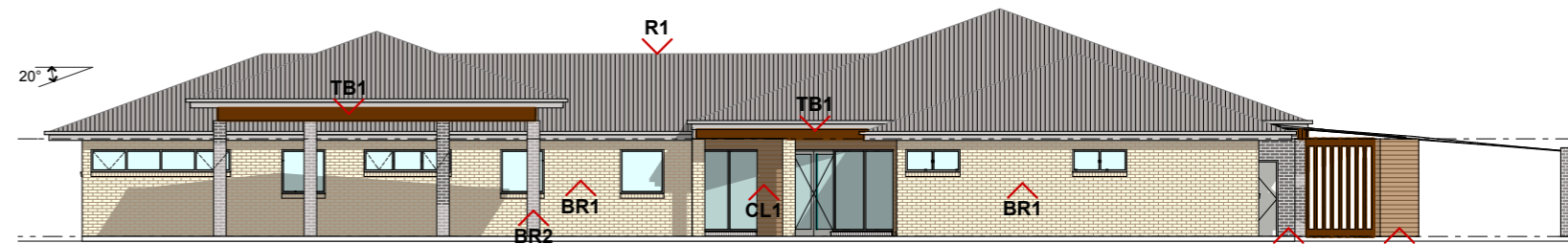
# COMMUNITY CENTRE PLAN

1:200



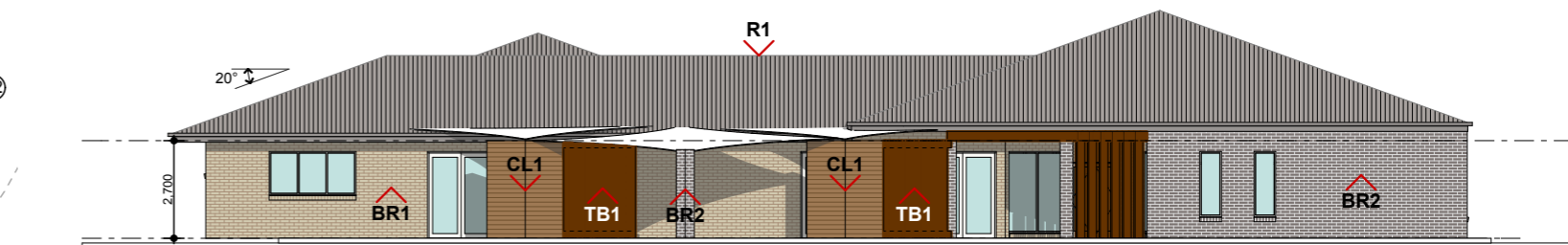
**ELEVATION E1 ( SE )**

1:200



**ELEVATION E2 ( NE )**

1:200



**ELEVATION E3 ( NW )**

1:200



**ELEVATION E4 ( SW )**

1:200

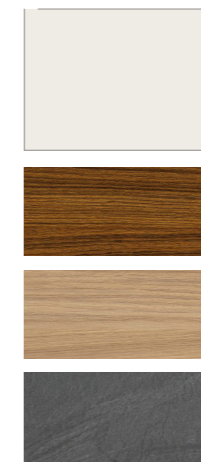
## MATERIALS SCHEDULE



**COLORBOND: "DUNE" R1**  
 - CUSTOM ORB COLORBOND ROOF  
 - COLORBOND GUTTERS, FASCIAS +DP'S

**BRICK TYPE BR1:**  
 PGH SMOOTH RANGE: "CASHMERE"  
 ( STANDARD LIGHT GREY MORTAR )

**BRICK TYPE BR2:**  
 PGH SMOOTH RANGE: "VOLCANIC"  
 ( "OFF WHITE" MORTAR )



**WINDOW / DOOR FRAMES :**  
 DULUX POWDERCOAT:  
 "NATURAL WHITE"

**TIMBER TB1:**  
 SELECTED DARK TIMBER  
 ( TIMBER BEAM / SCREEN )

**CLADDING CL1:**  
 FUNDERMAX CLADDING:  
 "ENIGMA"

**EXTERIOR PAVER:**  
 SELECTED PAVER:  
 "CHARCOAL COLOUR"

NAIRN ARCHITECTURE



135c Eighth Street, Mildura PO Box 2752, Mildura 3502  
 03 5023 6791 mail@nairnarchitecture.com.au  
 nairnarchitecture.com.au facebook.com/nairnarchitecture

PROPOSED KARADOC HILL RETIREMENT VILLAGE  
 1039 KARADOC AVENUE, IRYMPLE, VICTORIA.

SOUTHERN CROSS CARE  
 (BROKEN HILL) LTD

COMMUNITY CENTRE PLAN  
 AND ELEVATIONS

Design: ADN / NG	Drawn: AT / NG	Checked: ADN / AT / NG
NA Project No: NA-1430	Page No: CS03	Date: 01.08.2016
		Scale: AS SHOWN

Plot Date: Friday, 20 January 2017  
 Copyright to Nairn Architecture.